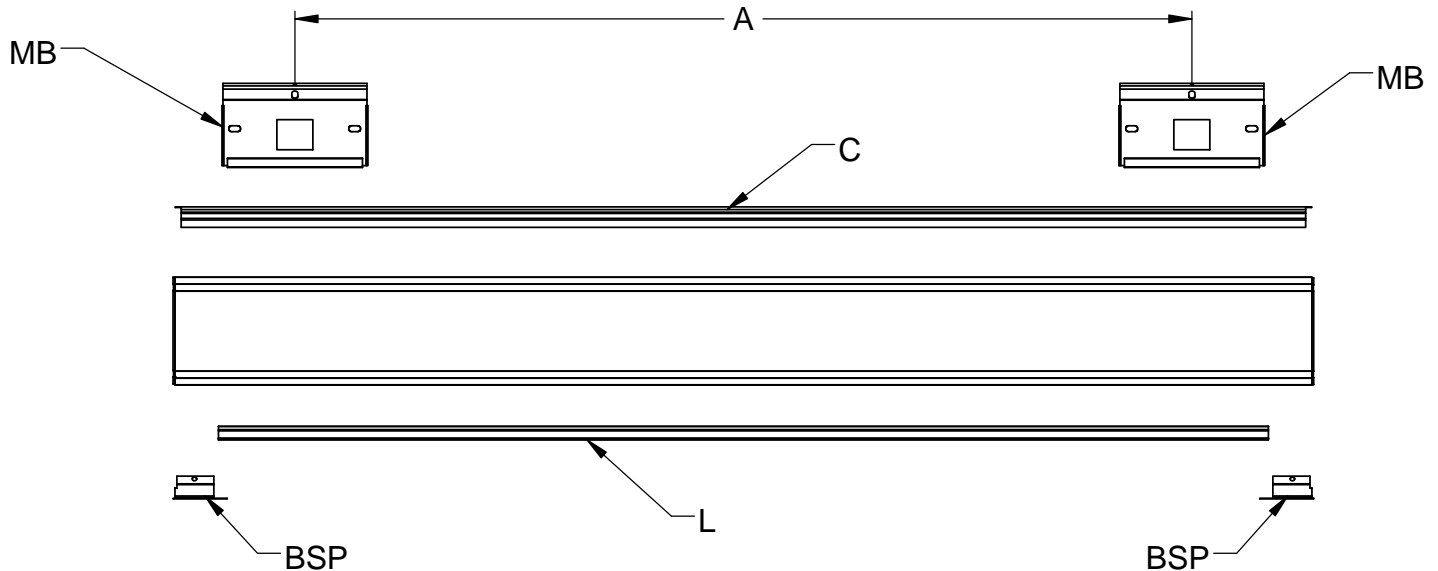


WARNING: ELECTRICAL SHOCK POTENTIAL !! DO NOT ATTEMPT TO INSTALL, MAINTAIN OR RELAMP WITHOUT DIS-CONNECTING ALL POWER, FAILURE TO DISCONNECT POWER CAN RESULT IN ELECTROCUTION, SHOCK OR SEVERE BURNS. ONLY QUALIFIED PERSONNEL TO CONDUCT ELECTRICAL INSTALLATION.

Light source	21WT5 or 39WT5HO	28WT5 or 54WT5HO	21WT5 or 39WT5HO	28WT5 or 54WT5HO	21WT5 or 39WT5HO	28WT5 or 54WT5HO
Nominal luminaire length	3ft	4ft	6ft	8ft	9ft	12ft
Actual luminaire length	35.625"	47.375"	65.250"	88.875"	95.000"	130.375"
Mounting spacing	25.625"	37.375"	55.250"	78.875"	85.000"	120.375"



step 1:

Disconnect power.

step 2:

Remove top snap in cover (C), bottom lenses (L), bottom snap in plates (BSP), and detach mounting brackets (MB).

step 3:

Fasten mounting brackets to the wall. For spacing refer to table provided.

step 3:

Bring the power through wiring entry hole than mount and secure unit.

step 4:

Make wiring connections according to local electrical cod and insert and secure top reflectors R.

step 5:

Insert proper lamps (supplied by others).

step 6:

Reinstall top and bottom snap in plates and lenses.

step 7:

Connect power.